

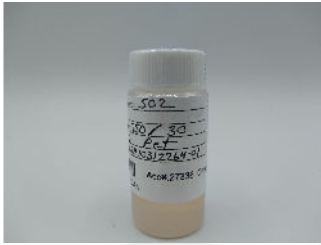
Commonwealth Extracts

6900 Riverport Dr. Ste D
Louisville, KY 40258
terri@commonwealthextracts.com
502-450-6044

Sample: 11-21-2022-27336

Sample Received: 11/21/2022;
Report Created: 11/23/2022; Expires: 11/22/2023

502 Hemp 750mg/30mL FSD Pet Natural Batch:5H10312264-01
Concentrate & Extracts , Tincture



0.022%

Total THC

0.022%

Δ-9 THC

2.686 %

Total Cannabinoids

2.527 %

Total CBD

Cannabinoids

(Testing Method:HPLC, CON-P-3000)
Date Tested: 11/21/2022

Complete

Analyte	LOD	LOQ	Mass	Mass	
	%	%	%	mg/g	
Δ-8-Tetrahydrocannabinol (Δ-8 THC)	0.0094	0.0142	0.031	0.311	█
Δ-9-Tetrahydrocannabinol (Δ-9 THC)	0.0094	0.0142	0.022	0.225	█
Δ-9-Tetrahydrocannabinolic Acid (THCA-A)	0.0094	0.0142	ND	ND	█
Δ-9-Tetrahydrocannabinophorol (Δ-9-THCP)	0.0094	0.0142	ND	ND	█
Δ-9-Tetrahydrocannabivarin (Δ-9-THCV)	0.0094	0.0142	ND	ND	█
Δ-9-Tetrahydrocannabivarinic Acid (Δ-9-THCVA)	0.0094	0.0142	ND	ND	█
R-Δ-10-Tetrahydrocannabinol (R-Δ-10-THC)	0.0094	0.0142	ND	ND	█
S-Δ-10-Tetrahydrocannabinol (S-Δ-10-THC)	0.0094	0.0142	ND	ND	█
9R-Hexahydrocannabinol (9R-HHC)	0.0094	0.0142	ND	ND	█
9S-Hexahydrocannabinol (9S-HHC)	0.0094	0.0142	ND	ND	█
Tetrahydrocannabinol Acetate (THCO)	0.0094	0.0142	ND	ND	█
Cannabidivarin (CBDV)	0.0079	0.0142	<LOQ	<LOQ	█
Cannabidivarinic Acid (CBDVA)	0.0094	0.0142	ND	ND	█
Cannabidiol (CBD)	0.0094	0.0142	2.510	25.101	█
Cannabidiolic Acid (CBDA)	0.0094	0.0142	0.020	0.196	█
Cannabigerol (CBG)	0.0094	0.0142	<LOQ	<LOQ	█
Cannabigerolic Acid (CBGA)	0.0094	0.0142	ND	ND	█
Cannabinol (CBN)	0.0094	0.0142	0.019	0.189	█
Cannabinolic Acid (CBNA)	0.0094	0.0142	ND	ND	█
Cannabichromene (CBC)	0.0094	0.0142	0.084	0.836	█
Cannabichromenic Acid (CBCA)	0.0094	0.0142	ND	ND	█
Total			2.686	26.858	

Total THC = THCa * 0.877 + Δ9-THC; Total CBD = CBDa * 0.877 + CBD; LOQ = Limit of Quantitation; ND = Not Detected.

Total THC Measurement of Uncertainty: ± 0.040%
Total CBD Measurement of Uncertainty: ± 2.000%
THCO potency analysis does not designate quantitative specificity of Δ-8-THCO and Δ-9-THCO isomers



New Bloom Labs
6121 Heritage Park Drive, A500
Chattanooga, TN 37416
(844) 837-8223
TN DEA#: RN0563975

Natalie Siracusa
Natalie Siracusa
Laboratory Director

New Bloom Labs
10606 Shady Trail, 105
Dallas, TX 75520
(844) 837-8223
TX DEA#: RN0594653

Powered by
reLIMS
info@relims.com