



Certificate of Analysis

Sample:KN20331008-007
Harvest/Lot ID: 5H03282257-01

Batch#: 5H03282257-01

Seed to Sale# N/A

Batch Date: 03/28/22

Sample Size Received: 10 ml

Total Weight/Volume: N/A

Retail Product Size: 10 ml

ordered : 03/29/22

sampled : 03/29/22

Completed: 04/08/22 Expires: 04/08/23

Sampling Method: SOP Client Method

PASSED

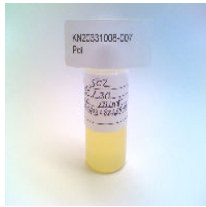
Page 1 of 1

Apr 08, 2022 | Commonwealth Extracts, LLC

6900 Riverport Dr
Louisville, KY, 40258, US



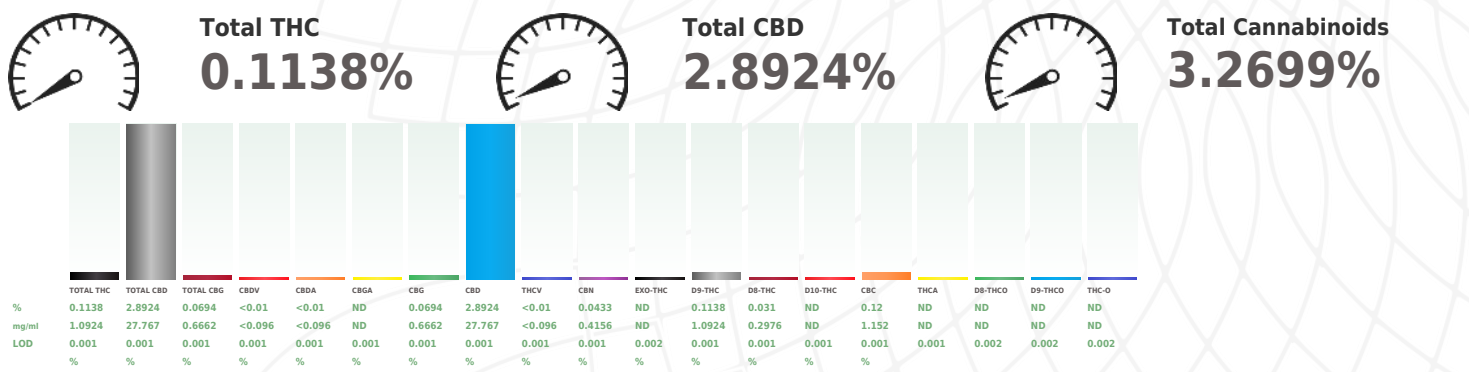
PRODUCT IMAGE SAFETY RESULTS



								
Pesticides NOT TESTED	Heavy Metals NOT TESTED	Microbials NOT TESTED	Mycotoxins NOT TESTED	Residuals Solvents NOT TESTED	Filtration NOT TESTED	Water Activity NOT TESTED	Moisture NOT TESTED	Terpenes NOT TESTED

MISC.

 **Cannabinoid** **PASSED**

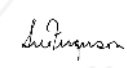


Cannabinoid Profile Test

Analyzed by: 1	Weight: 0.2144g	Extraction date: 03/31/22 01:05:57	Extracted By: 113
Analysis Method -Expanded Measurement of Uncertainty: Flower Matrix d9-THC:12.7%, THC: 9.5%, TOTAL THC 11.1%. These uncertainties represent an expanded uncertainty expressed at approximately the 95% confidence level using a coverage factor k=2 for a normal distribution.			
Analytical Batch -KH002181POTInstrument Used : HPLC E-SM-008 Running On :			
Dilution : 40			
Reagent : 081321.R04 033122.R01: 031822.R11			
Consumables : 947.251: 32123-046CC-046			
Full spectrum cannabinoid analysis utilizing High Performance Liquid Chromatography with UV/PDA detection (HPLC-UV/PDA). (Method: SOP.T.30.031.TN for sample prep and Shimadzu High Sensitivity Method SOP.T.40.031 for analysis).			
*Based on FL action limits.			

This report shall not be reproduced, unless in its entirety, without written approval from Kaycha Labs. This report is an Kaycha Labs certification. The results relate only to the material or product analyzed. Test results are confidential unless explicitly waived otherwise. Void after 1 year from test end date. Cannabinoid content of batch material may vary depending on sampling error. IC=In-control QC parameter, NC=Non-controlled QC parameter, ND=Not Detected, NA=Not Analyzed, ppm=Parts Per Million, ppb=Parts Per Billion. Limit of Detection (LoD) and Limit Of Quantitation (LoQ) are terms used to describe the smallest concentration that can be reliably measured by an analytical procedure. RPD=Reproducibility of two measurements. Action Levels are State determined thresholds for human safety for consumption and/or inhalation. The result >99% are variable based on uncertainty of measurement (UM) for the analyte. The UM error is available from the lab upon request. The "Decision Rule" for the pass/fail does not include the UM. The limits are based on F.S. Rule 64-4.310.

Sue Ferguson
Lab Director
State License # n/a
ISO Accreditation # 17025:2017


Signature

04/08/22
Signed On