

502 Hemp 750mg/30mL FSD Berry

Sample ID: SA-10212021-4942
 Batch: 5H10202120-01
 Type: Finished Products
 Matrix: Oil / Liquid - MCT Oil

Received: 10/21/2021
 Completed: 11/02/2021

Client
 Commonwealth Extracts
 6900 Riverport Drive Suite D
 Louisville, KY 40258
 USA



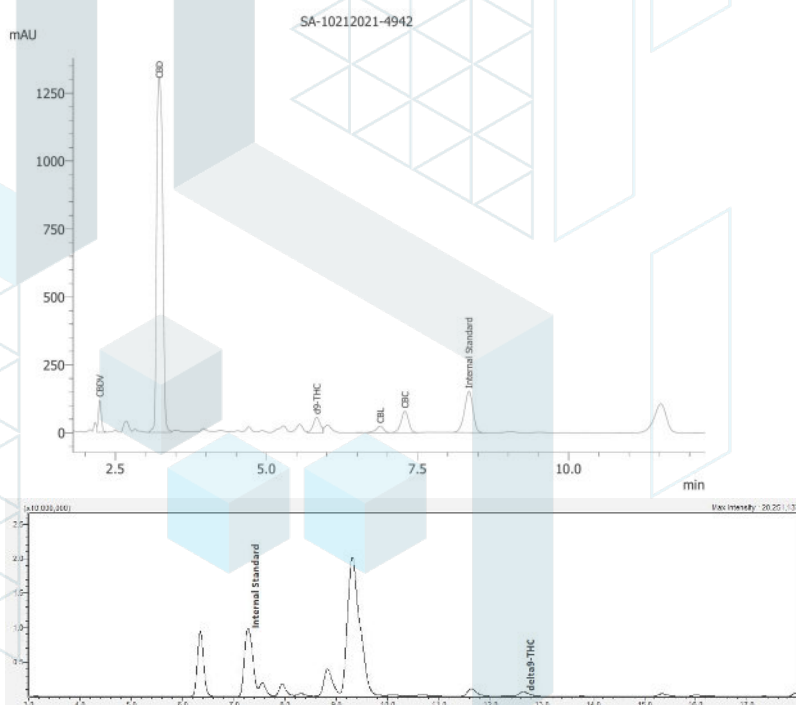
Summary

Test	Date Tested	Status
Cannabinoids	11/02/2021	Tested

Cannabinoids by HPLC-PDA and GC-MS/MS

0.0424 %	2.84 %	3.01 %	Not Tested	Not Tested	Yes
Total Δ9-THC	CBD	Total Cannabinoids	Moisture Content	Foreign Matter	Internal Marker Recovered

Analyte	LOD (mg/mL)	LOQ (mg/mL)	Result (mg/mL)	Result (%)
CBC	0.00095	0.00284	0.561	0.0597
CBCA	0.00181	0.00543	ND	ND
CBCV	0.0006	0.0018	ND	ND
CBD	0.00081	0.00242	26.7	2.84
CBDA	0.00043	0.0013	ND	ND
CBDV	0.00061	0.00182	0.385	0.041
CBDVA	0.00021	0.00063	ND	ND
CBG	0.00057	0.00172	0.038	0.00405
CBGA	0.00049	0.00147	ND	ND
CBL	0.00112	0.00335	0.186	0.0198
CBLA	0.00124	0.00371	ND	ND
CBN	0.00056	0.00169	ND	ND
CBNA	0.0006	0.00181	ND	ND
Δ8-THC	0.00104	0.00312	ND	ND
Δ9-THC	0.00076	0.00227	0.398	0.0424
Δ9-THCA	0.00084	0.00251	ND	ND
Δ9-THCV	0.00069	0.00206	ND	ND
Δ9-THCVA	0.00062	0.00186	ND	ND
Total Δ9-THC			0.398	0.0424
Total CBD			26.7	2.84
Total			28.2	3.01



ND = Not Detected; NT = Not Tested; LOD = Limit of Detection; LOQ = Limit of Quantitation; RL = Reporting Limit; Δ = Delta; Total Δ9-THC = Δ9-THCA * 0.877 + Δ9-THC; Total CBD = CBDA * 0.877 + CBD;



11/02/2021

This product or substance has been tested by KCA Laboratories using validated testing methodologies and an ISO/IEC 17025:2017 accredited quality system. Values reported relate only to the product or substance tested. The reported result is based on a sample weight. Unless otherwise stated, results of tests performed on all quality control samples met criteria for acceptance established by KCA Laboratories. KCA Laboratories makes no claims as to the efficacy, safety or other risks associated with any detected or non-detected amounts of any substances reported herein. This Certificate of Analysis shall not be reproduced except in full, without the written approval of KCA Laboratories. KCA Laboratories can provide measurement uncertainty upon request.

